

Is it a function?

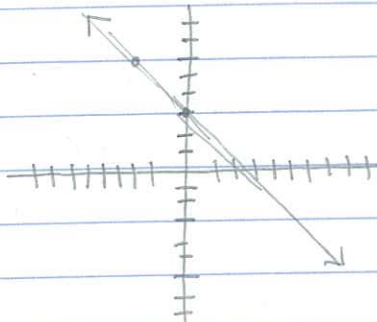
linear equation



• $2y + 3x = 6$
 $-3x - 3x$

$y = -3/2x + 3$

$2y = \frac{-3x + 6}{2}$



x	y
-3	7.5
-2	6
-1	4.5
0	3
1	1.5
2	0

yes, this is a function because the inputs only have one output as a result.

• $y^2 + 3x = 6$
 $-3x - 3x$

$y = (\pm)\sqrt{-3x + 6}$

$\sqrt{y^2} = \sqrt{-3x + 6}$

Not a function, b/c it will give you 2 outputs.